



MODERNFUEL

Main Gallery Specs

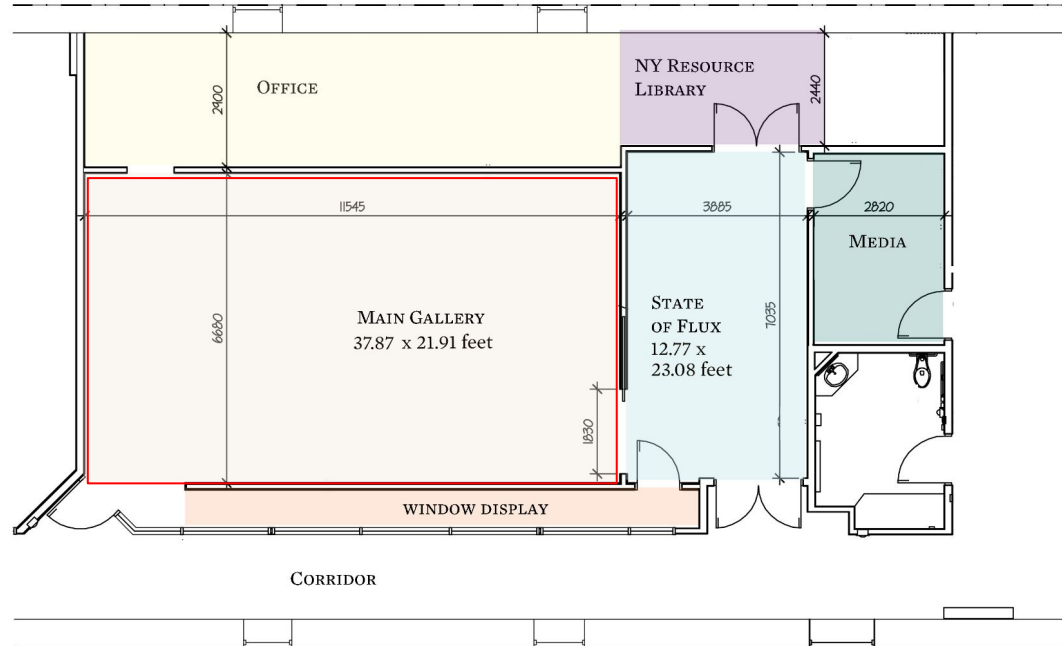
About Modern Fuel's Exhibition Spaces

- Modern Fuel Artist-Run Centre has three exhibition spaces - the Main Gallery, State of Flux Gallery, and the Window Gallery. In accordance with the CARFAC fee schedule, the State of Flux Gallery and Window Gallery are defined as project spaces.
- Modern Fuel's programming strives to reflect the diversity of aesthetic practices both regionally and extra-regionally, according to submission criteria as determined by the Director and Programming Committee. Proposals are selected according to their critical and exploratory character-exploratory insofar as they pose significant questions (formally, conceptually and politically) within current artistic and broader socio-cultural contexts.
- Modern Fuel accepts proposals for solo and group exhibitions, as well as performances, curatorial projects, and collaborations, each year from January to March when our Annual Call for Submissions is open. Proposals are not accepted outside of this timeframe. Modern Fuel schedules one year in advance, and therefore selected exhibitions are presented the following year.



NOTE: All measurements are in mm.

Floorplan
37.87 x 21.91 feet

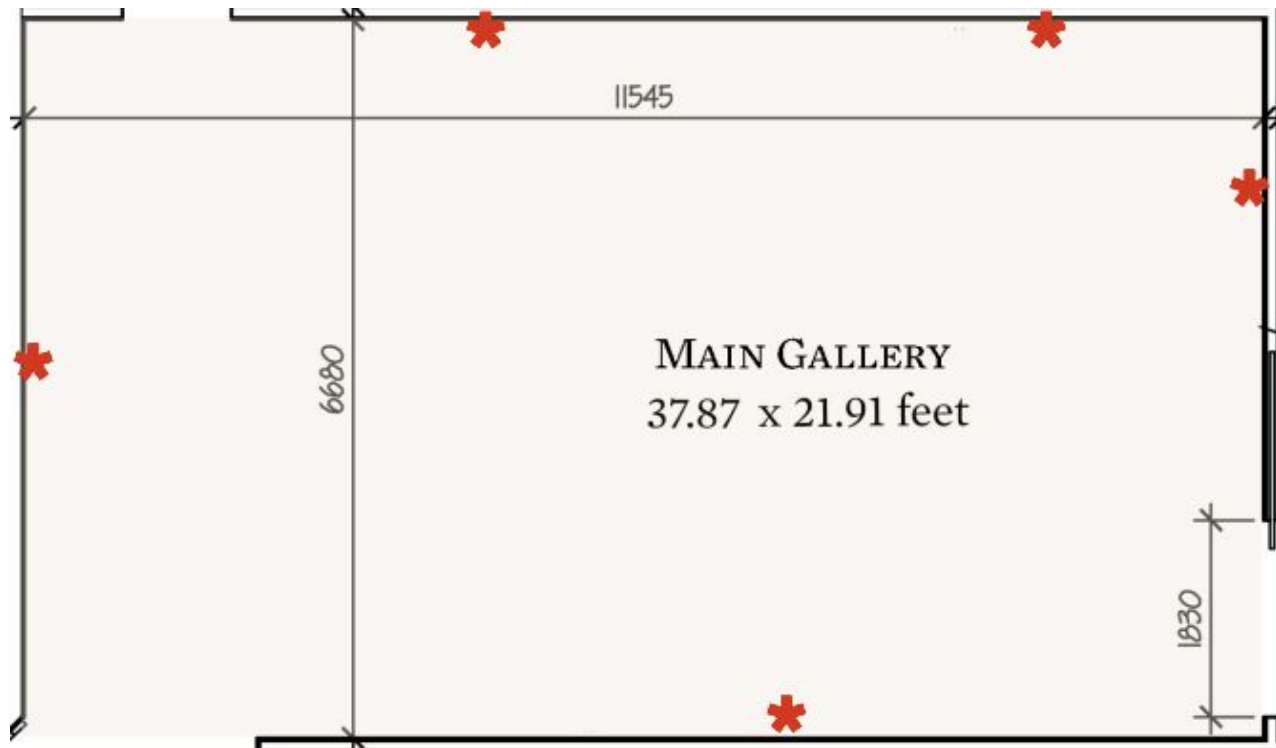


Floor to beams:
12.25 feet

Beams to top of ceiling:
10+ feet



Main Gallery has 5 electrical outlets



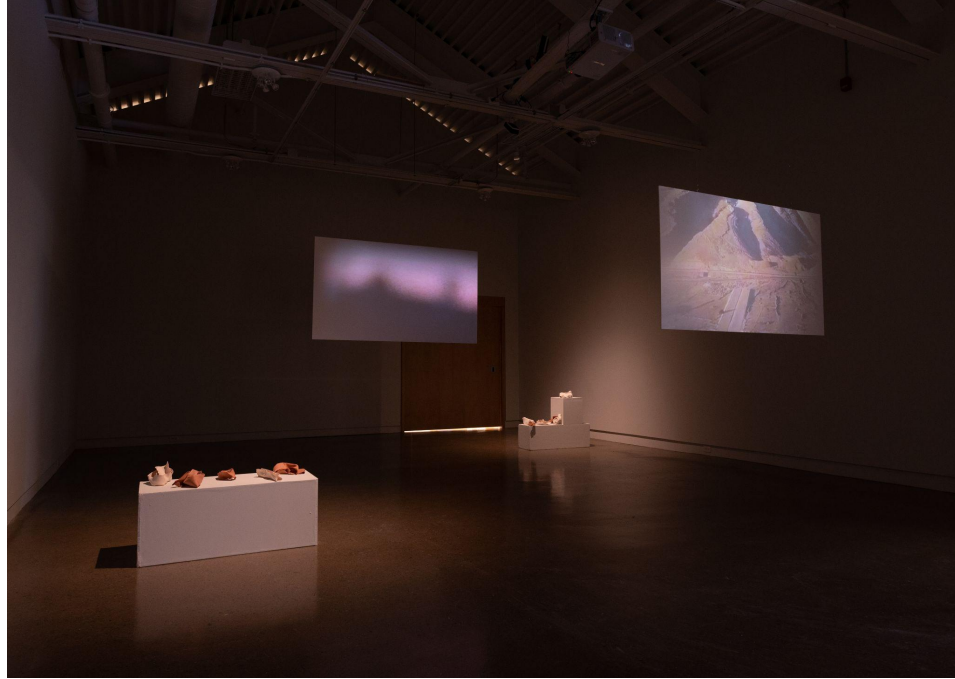
Additional Specs:

- There are 3 doorways in the space - the main entrance from the Tett Centre hallway, a curtained doorway into the Office space, and a sliding door into the State of Flux Gallery.
- There are four beams in the ceiling, they are approximately 10 feet apart, and roughly 10 inches wide. They have a small piece of metal in the middle that goes upwards (sort of like an upside down T shape like this: `__|__`) The beams can hold a significant amount of weight. We have a few 10ft wooden planks that can also run between the ceiling beams if needed. Important to note that nothing can be hung from the track lighting as it is not strong enough to support any weight.
- The track lighting is adjustable and the lights can be moved around to help light exhibitions.

Main Gallery (Ceiling & Empty)



Examples of Main Gallery Exhibitions





MODERNFUEL

Window Gallery Specs

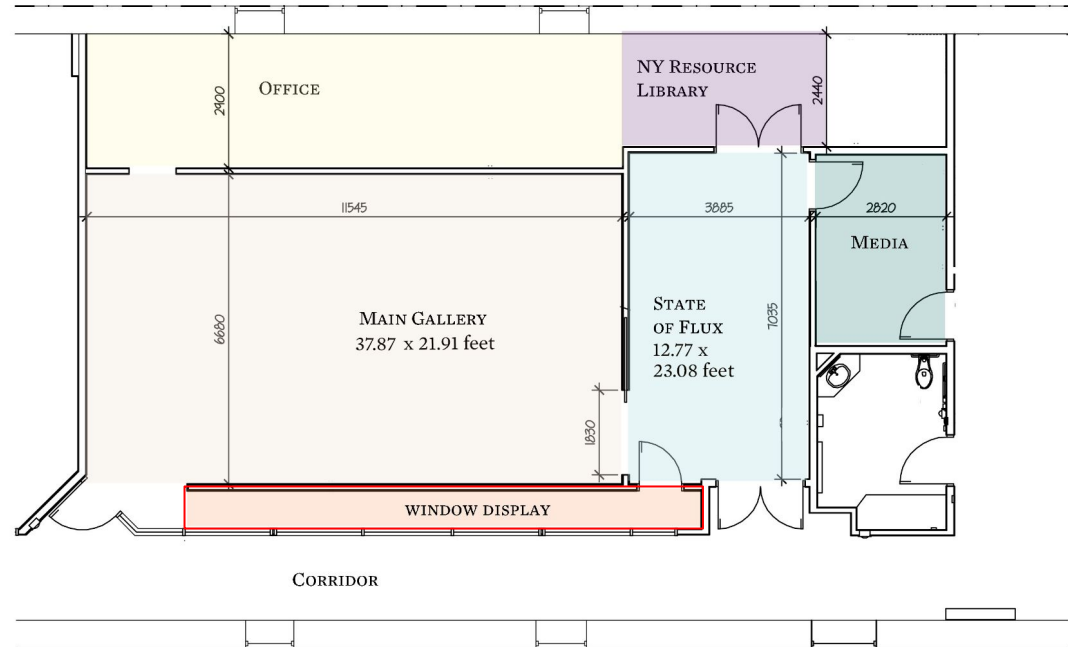


NOTE: All measurements are in mm.

Full Length: 31 feet 7 inches

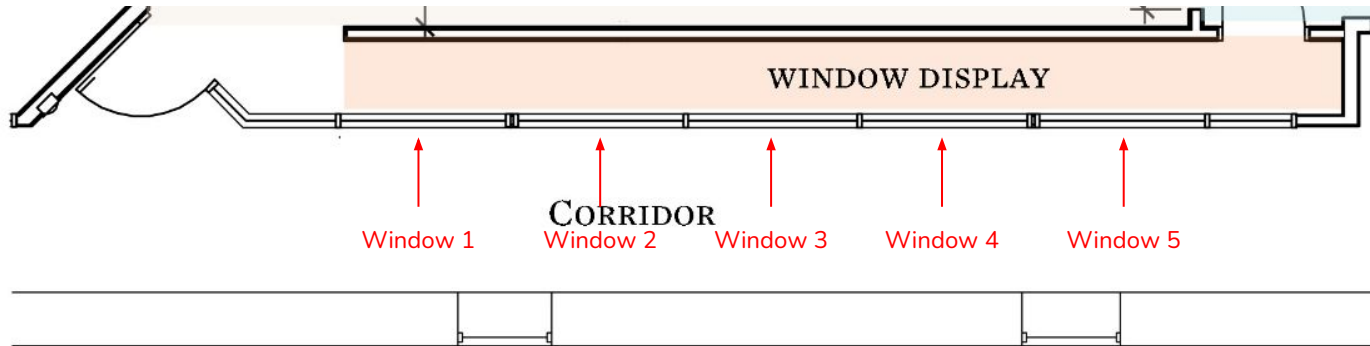
Wall Height: minimum 9 feet (viewable amount from the hallway) with baseboard of 5.5 inches

Depth: 3 feet from windows to back wall



There are 5 large windows that allow visitors to view through.

They are all 6 feet wide by 5 feet tall, with an additional window pane above each that is 6 feet wide by 10 inch tall.





5 feet tall

6 feet wide

The first window pane typically holds didactic information about the exhibition, but can be changed per show.



Examples of Window Gallery Exhibitions





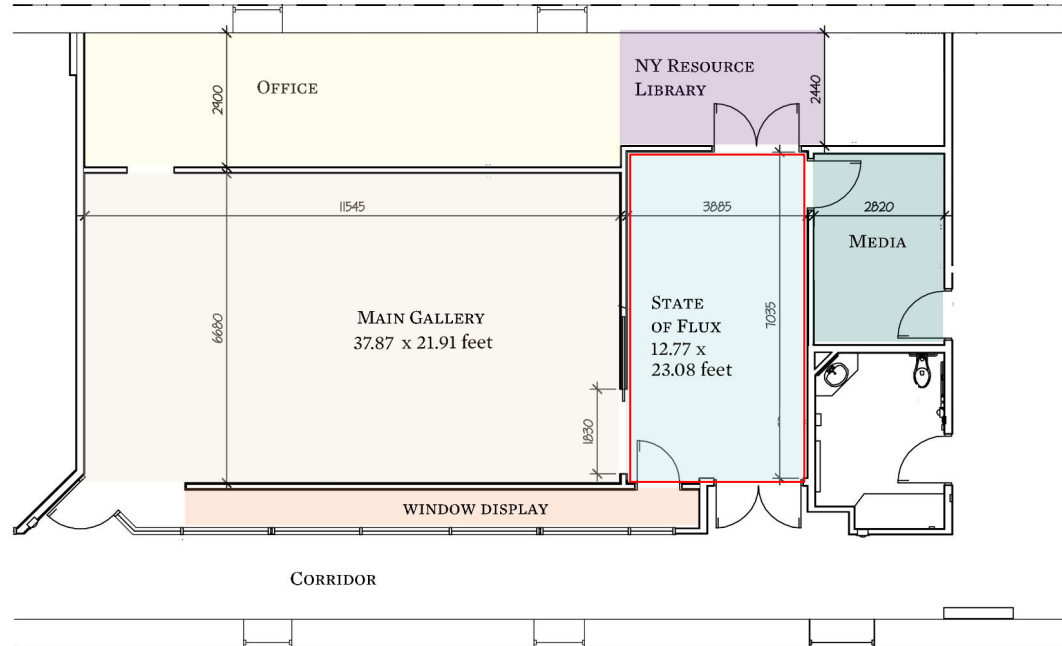
MODERNFUEL

State of Flux Gallery Specs



NOTE: All measurements are in mm.

Floorplan
12.77 feet x 23.08 feet



State of Flux Gallery has
2 electrical outlets



Additional Specs:

- There are 5 doorways in the space - a sliding door connecting the Main Gallery to the State of Flux, a entryway into the Window Space (typically curtained off during a show if the artist desires), a double doored entrance from the Tett Centre hallway, a single door into the New Media Workspace (NMW) and a double doored entrance into the Office space.
- There are two beams in the ceiling, they are approximately 10 feet apart, and roughly 10 inches wide. They have a small piece of metal in the middle that goes upwards (sort of like an upside down T shape like this: __|__) The beams can hold a significant amount of weight. We have a few 10ft wooden planks that can also run between the ceiling beams if needed for hanging. Important to note that nothing can be hung from the track lighting as it is not strong enough to support any weight.
- The track lighting is adjustable and the lights can be moved around to help light exhibitions.

State of Flux Gallery (Ceiling & Empty)



State of Flux Gallery Doorways



Tett Hallway, Window Space,
Main Gallery Entry



Office Entry, NMW Entry

Examples of State of Flux Gallery Exhibitions

